

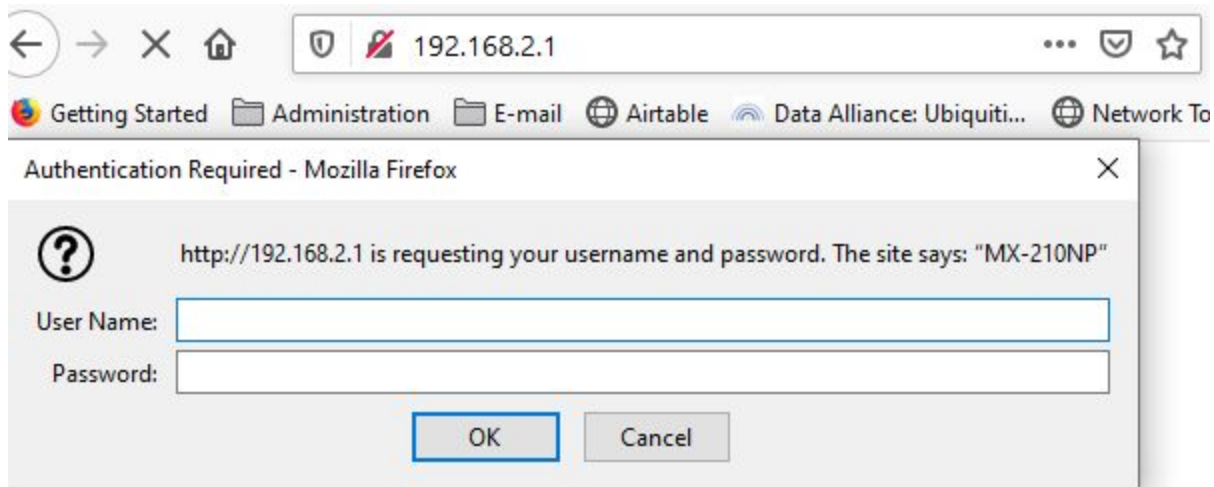
# High Speed Wireless Internet



530-605-2204

## How to Factory Reset Your Beacon Outdoor Unit


1. Make sure your computer is connected to the WiFi network, you do not need internet access for this, but the WiFi will give you access to the user interface of your unit.
2. Open your preferred web browser (Tested in Chrome, Firefox, Safari, and Edge)
3. Navigate to 192.168.2.1, you should see a login window pop up like so:

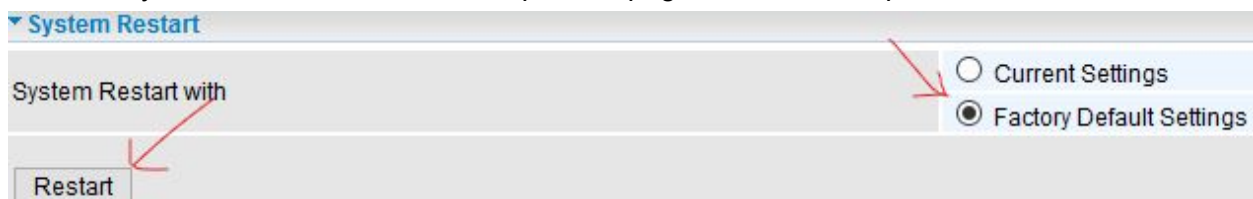


Note: The example screenshot was taken using the Firefox browser, appearance of the login window will change between browsers.

4. Enter “user” as both the username and password and select OK to log in.
5. After logging in, you should see this logo on the top left of the screen:



6. Scroll to the bottom of this page, you should see this  **Restart** button on the bottom right corner of the page. Click this button.
7. You should now see the System Restart options, select the “Factory Default Settings” option as seen below, then click the “Restart” button. Depending on your browser you may need to scroll back to the top of the page to see these options.



8. At this point you should be shown a progress bar, when the bar reaches 100%, the reset is complete. After a reset the unit can take anywhere from 2-10 minutes to reconnect to the internet.